



PRECISION AGRICULTURE

SELF-STEERING FARMING



DIRTY ENVIRONMENT



ROTARY



SMOOTH MOTION



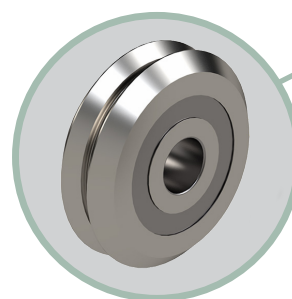
LONG LIFE

SteadySteer™ from Ag Leader® is designed to add GPS-assisted steering to nearly any agricultural vehicle – including tractors, sprayers, spreaders, and combines. The system reduces operator fatigue, reduces fuel consumption, and boosts pass-to-pass accuracy while in the field.

The mechanical drive unit of the hands-free SteadySteer™ system consists of a ring with a joint that clamps around the steering wheel.

CHALLENGE

Ag Leader® required a bearing that was capable of handling the high torque of the mechanical drive unit which controls the steering wheel slippage. Additionally, the bearing system must be reliable, withstand a high volume of dust and dirt, handle temperature variation, and must not generate noise or vibration issues when traveling over the joints in the ring.



SOLUTION

DualVee® guide wheels from Bishop-Wisecarver provide the reliable rotary guidance for the mechanical drive unit as they ride on the edge of a custom-manufactured ring. DualVee® outperforms the competition when it comes to reliability in harsh and debris-filled environments and overall life capacity. Self-cleaning vee guide technology wipes away any dust that could otherwise impede motion. Additionally, the wheels are able to traverse small gaps easily – meaning smooth motion over the clamping joint.